

# Learn About Tommy on HistoryForge!

pg. 1

## What is HistoryForge?

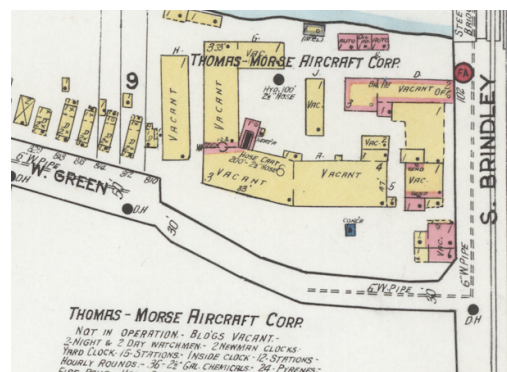


*HistoryForge is an innovative digital history project combining maps, archival records, and census data that allows any community to explore its local history through the individuals who lived there and the buildings and neighborhoods they lived in.*

You can search people and buildings from Ithaca's past at [www.historyforge.net](http://www.historyforge.net)!

## Where was Tommy built?

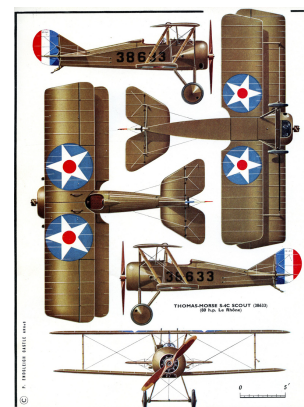
All 600 of the Thomas-Morse Scout planes were built by the Thomas-Morse Aircraft Corporation between **1917 and 1918**. Their factory was located at 120 S. Brindley St. in Ithaca. Use the "**Places**" search bar at [www.historyforge.net](http://www.historyforge.net) to search this address.



The History Center in Tompkins County, Sanborn Fire Insurance Atlas of Ithaca, 1910

## Questions

- Did you know sometimes the same words get spelled differently in different centuries? What's another way to spell airplane in English?
- What other businesses operated out of 120 S. Brindley Street in the 1900's?
- Where is Brindley Street? Try using Google Maps to see where the factory was located in Ithaca. What's there now?



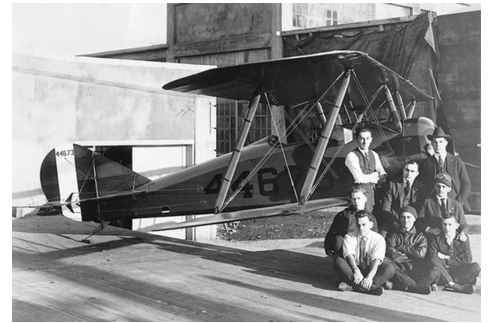
Contact [community@thehistorycenter.net](mailto:community@thehistorycenter.net) with any questions. Visit [www.thehistorycenter.net/learn](http://www.thehistorycenter.net/learn) for more History at Home activities.

# Learn About Tommy on HistoryForge!

pg. 2

## Who built Tommy?

*All of the Tommy planes were made in Ithaca; that means that everyone who worked on them lived in or near Ithaca too! If our Tommy was built in 1918, we should look at the census from 1920 to get the best idea of who might have worked on him in the factory.*



The History Center in Tompkins County,  
Thomas-Morse Factory Workers in 1918

**Databases can be a little tricky, so here are some steps to get you started:**

- Go to [www.historyforge.net](http://www.historyforge.net) select **People** > **1920 Census**
- Click on "Filter" beneath the page title and type in "**airplane**" and select "**Industry**"
  - **\*\*TIP\*\*** You can also try spelling it "**aeroplane**" and see if you get different answers!\*\*

## Questions

- Lots of different skills are needed to make a Tommy Plane! Look at the "**Profession**" line and write down five different professions you could have working in an airplane factory.
  - Did any of these jobs surprise you? How did each job help contribute to building the Tommy planes?
- Only **one woman in the Ithaca census worked at the Airplane Factory in 1920**. Can you find her name? What did she do?
- **People from around the world** worked on the Tommy Planes. Can you find workers from four different countries?
  - **\*\*TIP\*\*** You can look under both "Foreign Born" and "Place of Birth" to learn which workers were immigrants.

Contact [community@thehistorycenter.net](mailto:community@thehistorycenter.net) with any questions. Visit [www.thehistorycenter.net/learn](http://www.thehistorycenter.net/learn) for more History at Home activities.

THE  
HISTORY  
CENTER  
in Tompkins County